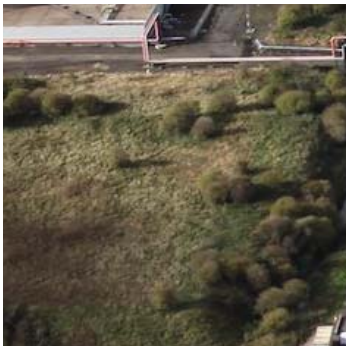




Riverside, United Kingdom

The Riverside Terminal is located on the River Tees within the heartland of the UK's chemical industry and around seven nautical miles up river from Seal Sands.





Riverside, United Kingdom



Riverside's bulk liquids and storage facilities can handle a wide range of products. Riverside's facilities also include specialised road tanker loading facilities for volatile and hazardous liquids.

Development land is available for expansion of the existing services and new projects for specific clients.

Riverside is a COMAH (Control of Major Accident Hazards) Upper Tier site and participates in the CDI-T (Chemicals Distribution Institute – Terminals) inspection

History and development

Riverside Terminal, which is located around seven nautical miles up river from Seal Sands Terminal, was acquired from ICI in 1999. Since then the site has undergone a major redevelopment, such as demolishing obsolete facilities, building new tankage and developing road tanker loading facilities.

Under ICI the main business of the terminal was the export of methanol and the import of raw materials for the manufacture of acrylics. Since then the methanol business has been acquired by Methanex and the acrylics business by Lucite. Inter Terminals continues to provide storage for both these

companies, the main difference now being that Methanex imports methanol and supplies it by road to its customers.

Technical skills

Riverside's bulk liquids storage facilities can handle a wide range of products. This capability is complemented by a particular expertise in the handling and storage of methanol, acetone and methyl methacrylate. Riverside's facilities also include specialised road tanker loading facilities for handling volatile and hazardous liquids.

Riverside also has land available to develop bespoke capacity for any new project or contract, and also has capacity for hire on an 'as required' basis.

Existing tankage can also be modified to provide tailor-made storage to suit a customer's precise requirements. These modifications can include replacing mild steel pipelines with stainless steel, lining tanks with rubber, glass or special coatings, heating tanks and pipelines and providing nitrogen blankets to protect the product from the environment and vice versa. Blending services can also be provided.

Facilities facts

- 65,000m³ of storage
- 1 jetty (6,250 DWT)
- rail access potential
- pipeline connections to Billingham
- COMAH Upper Tier site
- land for expansion and specific client projects
- volatile and hazardous materials competencies
- automated handling systems
- development land for new projects
- road tanker loading
- bespoke storage solutions
- project design and management
- access to group resources for IT, engineering and safety.
- one RoSPA Order of Distinction, five President's Awards, five Gold Medals and four Gold Awards

Key people

David Lyon
Terminal Manager
Tel: +44 (0) 1642 546775
David.Lyon@InterTerminals.com

Ian O'Donnell
Deputy Terminal Manager
Tel: +44 (0) 1642 546775
Ian.Odonnell@InterTerminals.com

Chris Tanner
Commercial Manager – Chemicals
Tel: +44 (0) 1642 546775
Chris.Tanner@InterTerminals.com

Elliot Dell
Commercial Manager – Oils
Tel: +44 (0) 1737 778108
Elliot.Dell@InterTerminals.com

Rachel Mundy
Sales and Marketing Manager
Tel: +44 (0)1469 563963
Rachel.Mundy@InterTerminals.com

Tank capacities

Capacity	Number
> 5,000m ³	1
> 2,500m ³	6
> 1,550m ³	8
> 750m ³	6
< 750m ³	1

Total 65,000m³ in 22 tanks